

NetSuite OpenAir Integration Services

An efficient and profitable PS is a *connected* PS

Improve data consistency and expand automation by connecting your NetSuite OpenAir system with other mission-critical business systems for a complete end-to-end solution.

Integrations require an understanding of more than simple field mapping and data rules. TOP Step's 10+ years of experience ensure your integrations consider business process workflows, end user behavior, timing and dependencies, and best practices that should be applied when integrating your PSA system to other critical operational systems in the business.

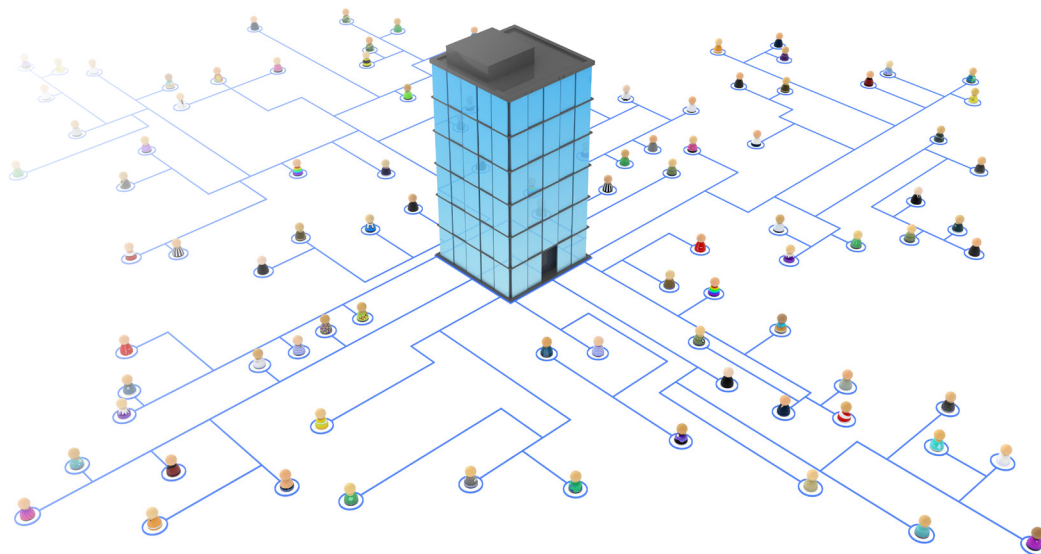
NetSuite OpenAir Integration Experience:

- Salesforce.com
- NetSuite ERP
- QuickBooks
- Oracle Financial Management
- SAP
- Microsoft Dynamics GP/Great Plains
- Concur
- Workday HR

Benefits

- Dedicated team experienced in PSA tools and integration best practices
- Leverage the strength of each systems intended purpose
- Improve speed at which information is available
- Increase communication accuracy across your business units

By leveraging our expertise, experience, and best practices we will help you step around any potential pitfalls.



Our Approach

We follow a simple and straightforward approach that delivers a superior solution.

1

Business Model Alignment and Design

- Use of workshops to identify system ownership by department.
- Review of data ownership by system.
- Determine data workflows, frequency, and integration technology/software.

2

Integration Build Out and Validation

- Gather field specifics from each system for mapping and transformation needs.
- Configure and connect integration technology to end systems.
- Establish use case and testing scenarios to confirm performance, design, error handling, and more.

3

Deploy and Monitor

- Support migration to a production environment with live data.
- Assist with data alignment needs and system outage coordination.
- Establish monitoring activities to ensure continued success.

Integration Tools We Use

We primarily utilize two best of breed tools for integration with NetSuite OpenAir; Dell Boomi AtomSphere® and NetSuite OpenAirCONNECT with additional leading integration products continually being evaluated and added to our tool set. Our integration experience combined with our expertise in NetSuite OpenAir allows us to help you quickly and smoothly design and implement the data integration exchanges for your specific PS business model.

“I would recommend TOP Step Consulting to any business that wants to partner with them. You can trust they’ll do the job right!” — Beaconfire RED

About TOP Step Consulting LLC

TOP Step Consulting improves business efficiency and productivity for Professional Services business operations. We help you achieve your profitability goals allowing you to focus on building your business. Our experts have extensive experience in professional services business operations, project management, and professional services automation with both local and global Professional Services organizations. We are proud to be awarded “Best of the Best” by SPI Research for seven consecutive years and be ranked as one of the fastest growing companies by Consulting Magazine and Inc. 5000.

Phone: 703.957.8370

Email: info@TOPStepConsulting.com

Connect With Us!



TOPStepConsulting.com



[twitter/TOPStepTweets](https://twitter.com/TOPStepTweets)



linkedin.com/company/top-step-consulting-llc



fb.com/TOPStepConsulting